

# KAYAKING

Ever since we released our first kayak in 2000, we've been focusing on their design, performance, quality, fixtures and fittings, to ensure that you get maximum fun out on the water. From the simplest Sit-On-Top to the easy to transport light-weight inflatables, our 2019 collection will satisfy all your expectations with innovative, aesthetic, stable kayaks delivering excellent sensations and satisfaction. They will quickly become the must have companions of all your family holidays. This year's inflatable range increases with the addition of two new high pressure kayaks, the Full HP 3 and the Full HP Fishing, exceptional quality inflatables for both construction and performance. In the rigid kayak range, the latest generation Borneo and Java boats are still our best-sellers, with all the features and assets that make the difference and have won them the Prix du Design prize. Made in our factory in France using the Twin Sheet thermoformed construction technique we have developed over the last 40 years, BIC Sport rigid kayaks also pay consideration to environmental issues: the technique has a low energy requirement, is non-polluting, and allows us to re-cycle and re-use all the off-cuts the production runs generate. And the entire kayak is re-cyclable at the end of its life. To help you make the best choice, the kayak ranges are classified and named according to the performance desired/intended. « Beach », « Sport », « Performance » and « Fishing » are labels that will guide you as you make your selection. So whether it's serious exploring, having fun at the beach, hooking big fish, or taking them travelling, we hope you'll enjoy the whole BIC Sport kayak range.









# OVERVIEW

## BEACH

## SPORT

RIGID



**OUASSOU** ®

**TRINIDAD** ®

**KALAO** ®

**BILBAO** ®

**TOBAGO** ®

Length 8'6" | 2.60m  
Width 31" | 0.78m  
Weight 39lbs | 18kg  
Max load 242lbs | 110kg  
Capacity 1 adult + 1 child\*  
Technology TST  
Ref Y0522 | 101112

Length 11'9" | 3.59m  
Width 33.1" | 0.84m  
Weight 63lbs | 28.5kg  
Max load 400lbs | 180kg  
Capacity 2 adults + 1 child\*  
Technology TST  
Ref Y0900

Length 14'4" | 4.35m  
Width 34.6" | 0.88m  
Weight 87lbs | 39.5kg  
Max load 683lbs | 310kg  
Capacity 2 adults + 2 children  
Technology TST  
Ref Y0813

Length 9'10" | 3.00m  
Width 31" | 0.78m  
Weight 46lbs | 21kg  
Max load 264lbs | 120kg  
Capacity 1 adult + 1 child\*  
Technology TST  
Ref Y0331 | 101113

Length 12'11" | 3.95m  
Width 33.1" | 0.84m  
Weight 70lbs | 32kg  
Max load 550lbs | 250kg  
Capacity 2 adults + 1 child  
Technology TST  
Ref Y0425 | 101114

## BEACH

## SPORT

INFLATABLE



**KALYMA DUO**

**KALYMA TRIO**

**FULL HP 1**

**FULL HP 2**

**FULL HP 3**

Length 11'0" | 3.35m  
Width 37.4" | 0.95m  
Weight ±33lbs | ±15kg  
Max load 440lbs | 200kg  
Capacity 2 adults  
Technology Inflatable  
Ref Y1006

Length 13'5" | 4.10m  
Width 37.4" | 0.95m  
Weight ±44lbs | ±20kg  
Max load 550lbs | 250kg  
Capacity 3 adults  
Technology Inflatable  
Ref 101496

Length 11.4" | 3.50m  
Width 33.5" | 0.85m  
Weight ±28lbs | ±13kg  
Max load 330lbs | 150kg  
Capacity 1 adult + 1 child\*  
Technology Full inflatable high-pressure  
Ref 101497

Length 13.5" | 4.10m  
Width 33.5" | 0.85m  
Weight ±34lbs | ±15.5kg  
Max load 460lbs | 210kg  
Capacity 2 adults + 1 child\*  
Technology Full inflatable high-pressure  
Ref 101499

Length 15'9" | 4.80m  
Width 30.7" | 0.78m  
Weight ±42lbs | ±19kg  
Max load 550lbs | 250kg  
Capacity 3 adults  
Technology Full inflatable high-pressure  
Ref 102226

## PERFORMANCE

## CANOE

## SIT-IN



**JAVA**

13'5" | 4.10m  
28" | 0.71m  
64lbs | 29kg  
330lbs | 150kg  
1 adult  
TST  
100096



**BORNEO**

13'5" | 4.10m  
33.1" | 0.84m  
75lbs | 34kg  
550lbs | 250kg  
2 adults + 1 child  
TST  
100093



**SCAPA FIT®**

14'5" | 4.40m  
26" | 0.66m  
50lbs | 23kg  
286lbs | 130kg  
1 adult  
TST  
101223



**OKLAHOMA**

14'7" | 4.40m  
37" | 0.94m  
77lbs | 35kg  
770lbs | 350kg  
2 adults + 1 child  
TBC  
102407



**OHIO**

10'10" | 3.30m  
26.4" | 0.67m  
55lbs | 25kg  
330lbs | 150kg  
1 adult  
TBC  
102408

## RIGID

## INFLATABLE

### FISHING



**BILBAO®  
FISHING**

9'10" | 3.00m  
31" | 0.78m  
50lbs | 23kg  
264lbs | 120kg  
1 adult  
TST  
Y0333



**TRINIDAD®  
FISHING**

11'9" | 3.59m  
33.1" | 0.84m  
65lbs | 29.5kg  
400lbs | 180kg  
2 adults + 1 child\*  
TST  
Y0902



**JAVA  
FISHING**

13'5" | 4.10m  
28" | 0.71m  
66lbs | 30kg  
330lbs | 150kg  
1 adult  
TST  
100097



**BORNEO  
FISHING**

13'5" | 4.10m  
33.1" | 0.84m  
77lbs | 35kg  
550lbs | 250kg  
2 adults + 1 child  
TST  
100095



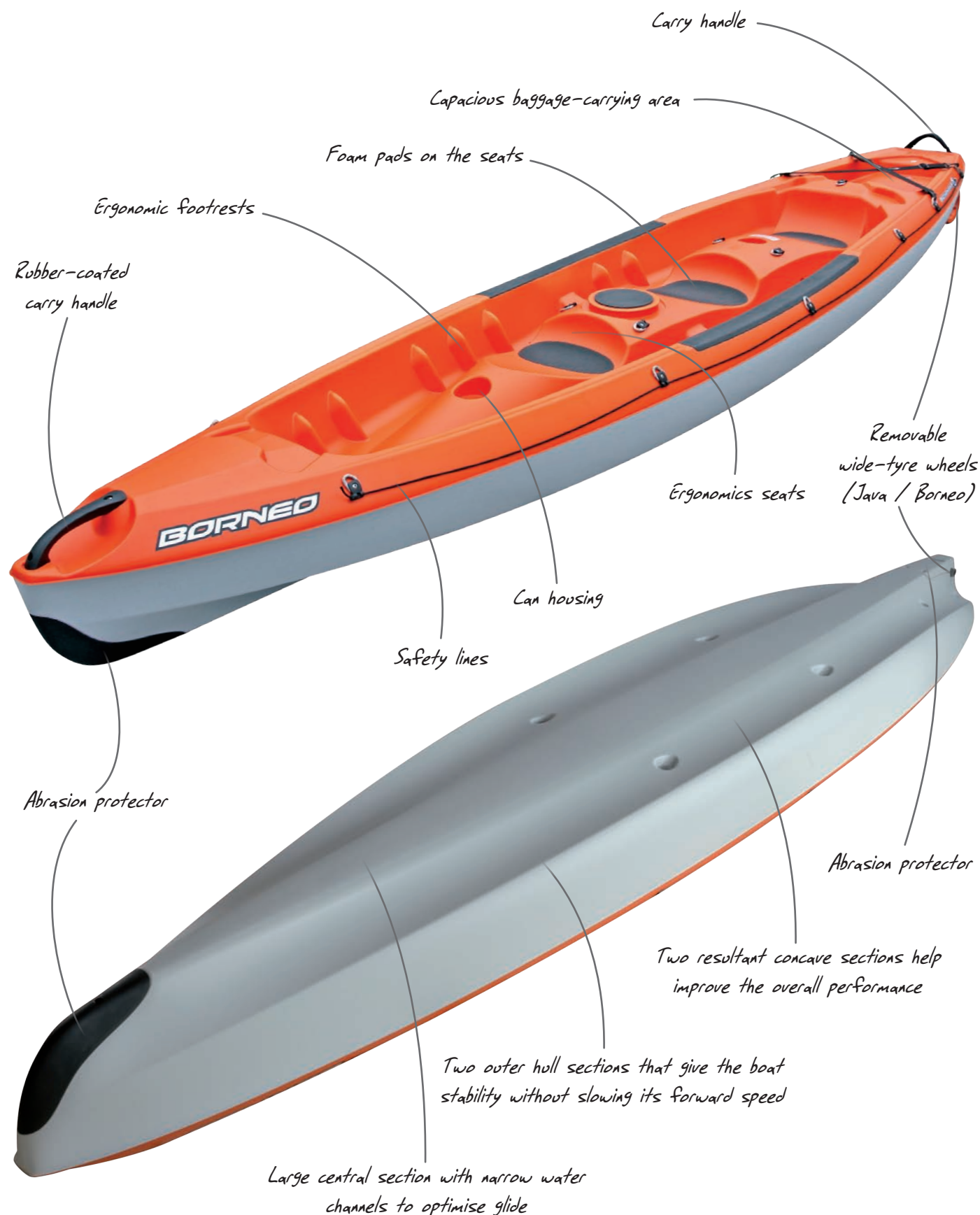
**FULL HP  
FISHING**

13'5" | 4.10m  
33.5" | 0.85m  
±35lbs | ±16kg  
460lbs | 210kg  
2 adults  
Full inflatable high-pressure  
102227



# KEY PRODUCT FEATURES

As a leading specialist in board and water sports, we've designed a range of high-performance, aesthetically pleasing kayaks that are as durable as they are innovative : imaginative hull designs, fast and stable ride, thermoformed polyethylene construction produced in France, ergonomically designed cockpits and seats, top quality fittings and fixtures, every possible care has been taken to ensure you get maximum pleasure from your time on the water. Various BIC Sport kayaks have been recognised with awards from the influential «Observateur du Design» magazine for their overall design, innovative features, and for the environmental considerations behind their manufacturing/construction technology.





# TWIN SHEET TECHNOLOGY

## SUPER SOLID BUILD QUALITY

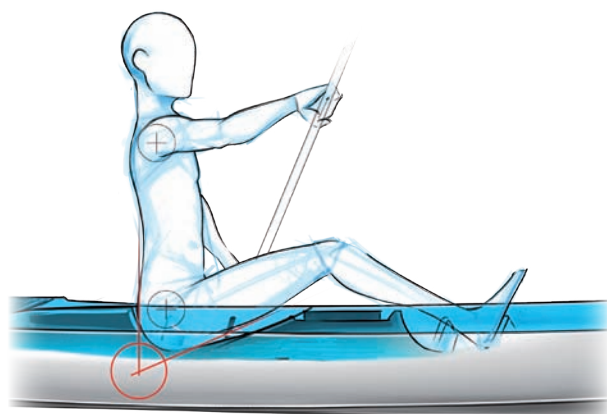
### TST - Twin Sheet Technology :

The exclusive Twin Sheet technology used in the construction of BIC Sport kayaks is achieved by using thermoformed Polyethylene sheets. The deck and hull sections are formed and sealed together in one single operation. The result of this fusion is incredibly durable, unique in kayak manufacture. The join line is invisible and 100% secure. This process, creating a product that is lighter, stronger and smoother finished than rotomoulding, is also anti-UV treated. Highly resistant to knocks and scratching, it gives all BIC Sport kayaks exceptional durability.

## ERGONOMIC SEATING

The seat ergonomics of the entire BIC Sport kayak range have been specially developed to ensure optimum paddle comfort.

- Flat back rest inclined towards the rear at the bottom to prevent the pelvis from being pushed forwards. This also relaxes the legs, relieving pressure against the foot rests.
- Centre of gravity set low down for improved stability, but above the flotation line so that the bottom of the seats stays dry.



## QUALITY FITTINGS AND FEATURES

All the integral production fittings of BIC Sport kayaks are top quality to guarantee durability and paddle comfort

- Foam seat pads = improved paddle comfort
- Rubber-coated front and rear carry handles = easy carrying on land
- Protective rear bumper = protection from knocks and easy launching
- Removable rear trolley wheels (Java/Borneo) or casters (Bilbao and Tobago) = easier transportation on land
- Life lines = easy to climb back on board
- Elasticated straps = simple, secure storage for bags and water bottles
- Storage net = stores your essential equipment within easy reach



*Ergonomic cockpit*



*Built-in adjustable foot rests*



*Land use configuration  
Wheels mounted on their axle*



*Water use configuration  
Wheels stowed in their storage hatch*



# BEACH



## ||| BEST FOR

Family paddling, learning to kayak, rentals, in-shore/beach and flat water (rivers and lakes).

## ||| FOR WHO?

Complete beginners and intermediate level occasional paddlers. Also recommended for groups (clubs, schools, families).

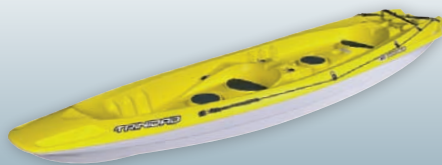
## ||| SUMMARY

Simple, stable kayaks at an affordable price, for flat water paddling.

## ||| KEY FEATURES

- Versatile kayaks with great stability thanks to its wide, flat hull design.
- Minimal water draught for exploring everywhere, even in the shallowest water .
- Wide rear storage area with integral elasticated straps for safely carrying equipment (Trinidad and Kalao).
- Can be adapted to fit an electric motor to extend exploration range.
- Stacks easily to help reduce storage space requirements for clubs (Trinidad and Kalao).





## OUASSOU®



Length	8'6"   2.60m
Width	31"   0.78m
Weight	39lbs   18kg
Max load	242lbs   110kg
Capacity	1 adult + 1 child*
Technology	TST
Ref	Yellow: Y0522 / Green: 101112

## TRINIDAD®



Length	11'9"   3.59m
Width	33.1"   0.84m
Weight	63lbs   28.5kg
Max load	400lbs   180kg
Capacity	2 adults + 1 child*
Technology	TST
Ref	Y0900

## KALAO®



Length	14'4"   4.35m
Width	34.6"   0.88m
Weight	87lbs   39.5kg
Max load	683lbs   310kg
Capacity	2 adults + 2 children
Technology	TST
Ref	Y0813

\* Child max 55lbs / 25kg

© Design: FRITSCH Associés.com & Bureau d'Étude BIC Sport





## BEST FOR

Learning and progressing kayaking, excursions and exploration, beach and coastal leisure paddling.

## FOR WHO?

Intermediate level paddlers looking for a quality kayak for use in all kinds of water conditions.

## SUMMARY

High performance hull design, quality fittings and features, extra-steady handling, these kayaks are perfect for safe and simple family group kayaking.

## KEY FEATURES

- Highly versatile kayaks equally well adapted to beginners and experts.
- Super-safe and stable THD hull design (similar to a tri-maran) with fine profiled tips for excellent water penetration and glide.
- Wide rear storage area with integral elasticated straps for carrying more equipment.
- Removable rear bumper/protector with integral roller for easy transportation, even solo.





## BILBAO®



Length	9'10"   3.00m
Width	31"   0.78m
Weight	46lbs   21kg
Max load	264lbs   120kg
Capacity	1 adult + 1 child*
Technology	TST
Ref	Blue: Y0331 / Green: 101113

## TOBAGO®



Length	12'11"   3.95m
Width	33.1"   0.84m
Weight	70lbs   32kg
Max load	550lbs   250kg
Capacity	2 adults + 1 child
Technology	TST
Ref	Blue: Y0425 / Green: 101114



# PERFORMANCE



## BEST FOR

Family and fitness kayaking, excursions and exploration.

## FOR WHO?

More demanding, advanced level paddlers looking for exceptional glide, superior quality features and fittings, and easy paddling in a wide variety of water conditions.

## SUMMARY

High-performance kayaks that benefit from the latest BIC Kayak innovations (integral roller, adjustable foot rests...). Perfect for more adventurous and extended outings.

## KEY FEATURES

- *Exploration/touring kayak, with high performance and paddle comfort*
- *Stable THD (similar to a trimaran ) hull design, specially shaped for optimum hydro-dynamics. (Borneo and Java).*
- *Very wide rear storage area with cross elasticated straps for carrying maximum equipment.*
- *Integral rollers for easy solo transportation, removable for maximum paddle speed. (Borneo and Java).*
- *Adjustable foot rests to suit all sizes of paddler and paddle positions (Java and Scapa).*
- *Replaceable, removable rear protector and forward stem reinforcements help extend the life of the kayak (Borneo and Java).*





## JAVA



Length	13'5"   4.10m
Width	28"   0.71m
Weight	64lbs   29kg
Max load	330lbs   150kg
Capacity	1 adult
Technology	TST
Ref	100096

## BORNEO



Length	13'5"   4.10m
Width	33.1"   0.84m
Weight	75lbs   34kg
Max load	550lbs   250kg
Capacity	2 adults + 1 child
Technology	TST
Ref	100093

## SCAPA Fit®



Length	14'5"   4.40m
Width	26"   0.66m
Weight	50lbs   23kg
Max load	286lbs   130kg
Capacity	1 adult
Technology	TST
Ref	101223











# KEY PRODUCT FEATURES

## GENERATION 100% HIGH PRESSURE

The Full HP 1, 2 and 3 reveal significant advances in the design of inflatable kayaks, with a paneled structure using the Drop Stitch technology. These high-pressure inflated, rock-solid panels, assembled around pre-formed bow and stern elements, combine to create an ultra-rigid, high-performance kayak. A true revolution in inflatables. The brand new HP 3 has exceptional technical features.

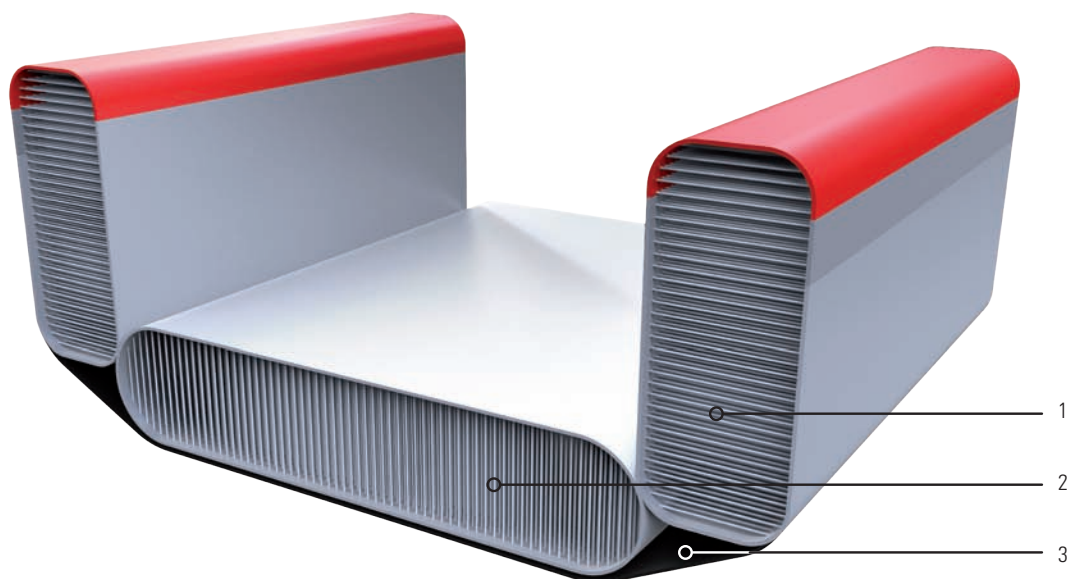


# INFLATABLE TECHNOLOGY

## FULL HP

### KEY FEATURES:

- Drop Stitch SSL (SelyTec Single Layer) technology
- High quality PVC specially treated to resist UV deterioration with an excellent resistance to the folding and unfolding : superior strength and rigidity, much lighter weight, remains ultra-stable over time
- High-resistance fabrics with perfect water-tightness: avoids any risk of water infiltration in the high-pressure inflatable sections.
- The panels are assembled using "Advanced SelyTech V2" exclusive glue: sealing and holding power with resistance to water and high temperature is more than twice that of the standard glues.



1- Side air chambers made of Drop Stitch material / 2- Bottom floor made of Drop Stitch material / 3- Reinforced PVC skin on the hull

## KALYMA

### KEY FEATURES:

- Floor cover and top hull of side chambers made in extra-strong 840-denier nylon Oxford fabric with polyurethane coating: better stiffness for easier paddling and better performance.
- Bottom and one third of outer side chambers are made of 1000-denier super-tough supported fabric: added strength and durability, abrasion resistance, and superior air retention.
- Strong zippers on main chambers and floor: easy access to inner hull to replace or repair bladders.
- Large screw-type valves for easy, fast inflation and deflation.



1- Heavy duty twin screw valve / 2- PVC bladder / 3- Nylon skin with highly resistant PU coating / 4- Heavy duty abrasion-resistant hull skin



# BEACH



## BEST FOR

Family fun, for learning to kayak, for beach paddling and flat water (lakes, rivers...).

## FOR WHO?

Beginners and occasional paddlers. Also recommended as a tender/kayak for yachts and pleasure boats.

## SUMMARY

Stable, inflatable, easy to use kayaks for flat water, with quality fittings, at an extremely affordable price.

## KEY FEATURES

- A stable, strong and light weight kayak, easy to transport in its carry bag.
- Inflates to pressure in less than 10 minutes thanks to its powerful pump.
- Triple-section independent inflation system, ensures the total safety of passengers.
- Direction guide line and hull-mounted fin for accurate course control.
- Flat, forward storage area with elasticated straps to carry equipment safely.
- High comfort, removable, adjustable seats to suit all shapes and sizes of paddler.
- Integral rear storage box with watertight bag inside for safely transporting equipment, valuables, etc.
- Auto-empty system helps with cleaning and maintenance.
- Ideal for solo, duo or trio use (Kalyma Trio), in good paddle comfort.



KALYMA Duo



Length	11'0"   3.35m
Width	37.4"   0.95m
Weight	±33lbs   ±15kg
Max load	440lbs   200kg
Capacity	2 adultes
Technology	Inflatable
Ref	Y1006

KALYMA TRIO



Length	13'5"   4.10m
Width	37.4"   0.95m
Weight	±44lbs   ±20kg
Max load	550lbs   250kg
Capacity	3 adults
Technology	Inflatable
Ref	101496



# PERFORMANCE



## BEST FOR

Family fun, fitness, leisure outings and exploration.

## FOR WHO?

Intermediate to advanced level paddlers looking for a top-of-the-range inflatable kayak for outings and exploration on all kinds of water, flat and rough.

## SUMMARY

High-performance inflatable kayaks made using Drop Stitch construction technology, giving them extremely good rigidity, plenty of space inside the cockpit, and a superior level of glide.

## KEY FEATURES

- Panelled, Drop Stitch high-pressure structure (same as our SUP range) = strength, stiffness and light weight.
- Manufactured with a fusion of high performance cloths and glues = powerful adhesion, durability.
- Profiled deck (with deep V moulded tip sections front and rear) and steep-angled run-offs = excellent glide, high performance, lateral stability, directional control.
- Versatile design concept = great for all kinds of kayaking styles (and even SUP !).
- Totally dual performance (FULL HP2) : identical solo and duo paddle comfort.
- Huge capacity for carrying equipment in the cockpit (plus extra, elasticated carry nets).
- Fast, easy inflation in less than 8 minutes thanks to its high pressure pump.
- H3 high-pressure valves = reliable, totally air-tight, replaceable.
- Self-empty bung = fast, easy emptying after use.
- Front deflector to minimise water entry in heavy chop.





FULL HP1



Length	11.4"   3.50m
Width	33.5"   0.85m
Weight	±28lbs   ±13kg
Max load	320lbs   145kg
Capacity	1 adult + 1 child*
Technology	Full inflatable high-pressure
Ref	101497



FULL HP2



Length	13.5"   4.10m
Width	33.5"   0.85m
Weight	±34lbs   ±15.5kg
Max load	463lbs   210kg
Capacity	2 adults + 1 child*
Technology	Full inflatable high-pressure
Ref	101499



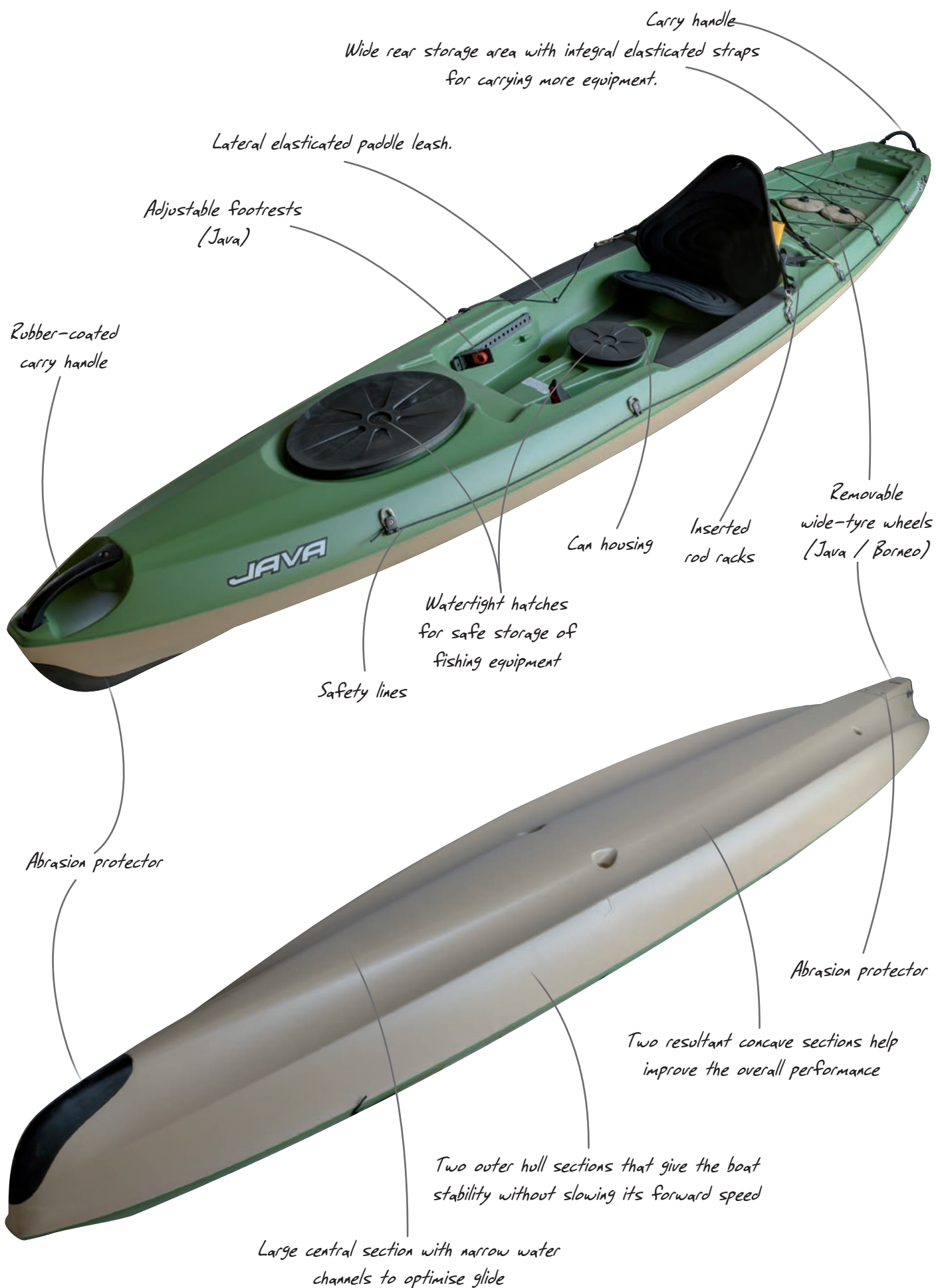
FULL HP3



Length	15'9"   4.80m
Width	30.7"   0.78m
Weight	±42lbs   ±19kg
Max load	550lbs   250kg
Capacity	3 adults
Technology	Full inflatable high-pressure
Ref	102226



# KEY PRODUCT FEATURES









# FISHING



## BEST FOR

Fishing, fun, expeditions. Beach and flat water paddling (Trinidad), or rough water and chop (Bilbao, Java, Borneo, FULL HP Fishing).

## FOR WHO?

Fishing enthusiasts looking for kayaks that are specifically designed and fitted for the purpose. The choice of model depends on what you want to do with it and want it to do.

## SUMMARY

Camouflage-coloured (beige and green) kayaks fitted out specifically for fishing, including watertight storage hatches, rod racks and rests... Enables you to access the widest possible variety of locations with properly adapted equipment. In addition to being excellent fishing kayaks, the Trinidad and Borneo are also well suited to all kinds of leisure and family excursions and expeditions.

## KEY FEATURES

- Forward and rear watertight hatches (round and oval respectively) for safe storage of fishing equipment.
- Double rod rack at rear.
- Lateral elasticated paddle leash.
- Wide rear storage area with integral elasticated straps for carrying more equipment.





\* Child max 55lbs / 25kg

### BILBAO Fishing



DEVELOPED  
& PRODUCED  
IN FRANCE

Length	9'10"   3.00m
Width	31"   0.78m
Weight	50lbs   23kg
Max load	264lbs   120kg
Capacity	1 adult
Technology	TST
Ref	Y0333

### TRINIDAD Fishing



DEVELOPED  
& PRODUCED  
IN FRANCE

Length	11'9"   3.59m
Width	33.1"   0.84m
Weight	65lbs   29.5kg
Max load	400lbs   180kg
Capacity	2 adults + 1 child*
Technology	TST
Ref	Y0902

### JAVA Fishing



DEVELOPED  
& PRODUCED  
IN FRANCE

Length	13'5"   4.10m
Width	28"   0.71m
Weight	66lbs   30kg
Max load	330lbs   150kg
Capacity	1 adult
Technology	TST
Ref	100097

### BORNEO Fishing



DEVELOPED  
& PRODUCED  
IN FRANCE

Length	13'5"   4.10m
Width	33.1"   0.84m
Weight	77lbs   35kg
Max load	550lbs   250kg
Capacity	2 adults + 1 child
Technology	TST
Ref	100095

### FULL HP Fishing



DEVELOPED  
& PRODUCED  
IN FRANCE

Length	13'5"   4.10m
Width	33.5"   0.85m
Weight	±35lbs   ±16kg
Max load	460lbs   210kg
Capacity	2 adults
Technology	Full inflatable high-pressure
Ref	102227



# ACCESSORIES



	ALU							CARBON				
	SWOOP			SWIFT OCEAN		SWING		SWIFT			SWING	
Lenght (cm)	190	220	220	220	220	230	240	215-225	225-235	240	215-225	225-235
Shaft (mm)	28	28	28	30	30	30	30	30	30	30	30	30
	2 parts	2 parts	4 parts	2 parts	2 parts	2 parts	2 parts	2 parts	2 parts	4 parts	2 parts	2 parts
Ref.	105400	105401	105402	105403	105404	105405	105406	105407	105408	105409	105410	105411

## Fins



Set 3 fins Soft FCS  
for Ouassou

## Motor Bracket



For Kalao & Trinidad

## Safety



Buoyancy Aid NINO  
15-30 KG  
ISO 12402-4



Buoyancy Aid BRANTOME II  
XS - S/M - L/XL  
ISO 12402-5



Buoyancy Aid WINDIGO  
XS - S/M - L/XL  
ISO 12402-5



Buoyancy Aid SHAMAN  
S/M - L/XL  
ISO 12402-5

## Protection Accessories



Knee straps

Spray skirt  
Nomad HP1 & HP3

Waterproof bags  
25L / 40L

## Kayak Pro Sail



1.2m²

## Transport



Kayak trolley  
Max load: 176lbs / 80kg

Kayak trolley Eco S  
Max load: 110lbs / 50kg

## Backrest



Ergonomic

Backrest aimed for maximum comfort. Ultra-rigid and ergonomic, it gives superb back support for less fatigue and more paddling power. Material: pre-formed, articulated, thermoformed foam with a rigid inner plate.



De luxe Fishing

Thick, ergonomic foam cushioning, rear pocket; 2 integral rod holders. Soft neoprene comfort.



Standard

Foam covered seat and back rest, comfort and support for your back, easy adjustment.



Power

Foam covered back rest, comfort and support for your back, easy adjustment.

## Accessories



Car roof strap

Roof rack foam pads

Paddle leash

Paddle multi-leash

Drain plug (x4)

Hatch lid  
diam. 20cm

Hatch kit  
diam. 20cm with screw

Hatch kit oval shape  
with screw

Kit rod support  
with screw

Photos:  
Emmanuel Berthier  
Franck Berthuat  
Pierre Bouras  
Julien Colonge  
Ben Thouard

# #bicsport

**BIC Sport exports to over 90 countries worldwide**

Algeria  
Andorra  
Antigua and Barbuda  
Argentina  
Aruba  
Australia  
Austria  
Republic of Belarus  
Belgium  
Belize  
Benin  
Bermuda  
Brazil  
Bulgaria  
Canada  
Chile  
China  
Colombia  
Croatia  
Cyprus

Czech Republic  
Denmark  
Djibouti  
Dominican Republic  
Egypt  
Estonia  
Finland  
France  
French Guiana  
French Polynesia  
Germany  
Greece  
Guadeloupe  
Hong-Kong  
Hungary  
India  
Indonesia  
Iran  
Ireland  
Israel

Italy  
Japan  
Jordan  
Kazakhstan  
Kuwait  
Latvia  
Lebanon  
Libya  
Lithuania  
Luxembourg  
Madagascar  
Malaysia  
Maldives  
Malta  
Martinique  
Mauritania  
Mauritius  
Mayotte  
Mexico  
Monaco

Montenegro  
Morocco  
New Caledonia  
New Zealand  
Nigeria  
Norway  
Oman  
Panama  
Peru  
Philippines  
Poland  
Portugal  
Republic of Korea  
Republic of Macedonia  
Reunion  
Romania  
Russia  
Senegal  
Serbia  
Seychelles

Singapour  
Slovakia  
Slovenia  
South Africa  
Spain  
Sri Lanka  
Sweden  
Switzerland  
Taiwan  
Thailand  
The Netherlands  
Tunisia  
Turkey  
Ukraine  
United Arab Emirates  
United Kingdom  
United States  
Uruguay  
Venezuela  
Viet Nam

 **BIC<sup>®</sup> Sport**  
[www.bicsport.com](http://www.bicsport.com)

**Take Outdoors France** - 58 Rue Alain GERBAULT - Zone Industrielle du PRAT - CP 3716 - CS 23716 - 56037 VANNES Cedex - FRANCE  
Tel: **33 (0)2 97 43 75 00** - Fax: **33 (0)2 97 43 75 01** - [contact-bic@bicsport.com](mailto:contact-bic@bicsport.com)

S.A.S.U. au capital de 1.812.075 euros - 781 626 957 R.C.S. VANNES - C.C.P NANTES 294111 W